

Twyford Waterworks Trust
Company limited by guarantee 1904919. Registered Charity No.
291720

Board of Trustees

Chairman	Mike Southgate 01962 713537
Vice Chairman	Vacant
Secretary/Company Secretary	Vacant
Treasurer	Richard Broadway

Sue Cook	Twyford Parish Council representative
tbc	Winchester City Council representative
Cecily Sutton	Hampshire Buildings Preservation Trust
Rob Humby	Hampshire County Council representative
John Wall	Hampshire County Council representative
Steven Baldwin	Winchester Model and Engineering Society

Volunteer representatives: Geoff Bailey, Colin Billingham, Ray Caine, Alan Down, Pam Moore, Steve Smith, Alan Tearle, Terry Forder-Stent

HLF Return to Steam Team

Graham Feldwick—HLF Project Director, Geoff Bailey, Colin Billingham, Richard Broadway, Ray Caine, Alan Down, Chris Fairlie, Matthew Feldwick, Terry Forder-Stent, Martin Gregory, Ian Harden, Jim Jones, Mike Matthews, Morley Slade, Steve Smith

Compliance / Health & Safety Co-ordinator	Ray Caine,
Clerk of Works	Colin Billingham
Restoration Co-ordinators	Geoff Bailey, Alan Down, Matthew Feldwick, Steve Smith

Twyford Waterworks Railway

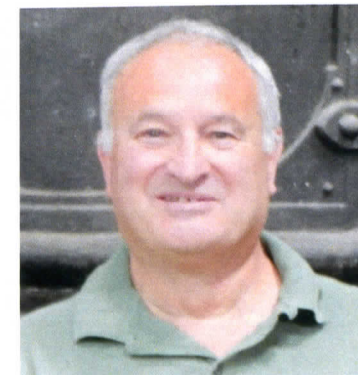
Grounds Co-ordinator	Graham Feldwick,
Heritage Co-ordinator	Matthew Feldwick
Friends Secretary	Terry Forder-Stent
Publicity coordinator	Martin Gregory
Open Day Co-ordinator	Lesley Feldwick
Newsletter Editor	Geoff Bailey
Webmaster	Alan Tearle
Tuesday Evening Gang (6pm - 9pm)	Vicky Feldwick
Housekeeping	Alan Tearle
	Matthew Feldwick
	Ian Harden

From the Chairman

As we look forward to the 2017 season I'd like to take this opportunity to thank you for all your support in 2016. It was an interesting and challenging year, when we had high hopes to return to steam, but it was not to be, for reasons that are well documented in the Newsletters. However, despite this we managed to attract and inform 2,031 visitors, an increase of 235 (13%) over 2015. May was particularly impressive with a 31% increase in visitors over 2015!

The strength of our organisation is ultimately down to the hard work that our many volunteers put into the Trust and the financial assistance given by the silent majority - the Friends of TWT. We wouldn't be where we are without you. If you are reading this and you are not a friend please give serious consideration to joining us.

Graham Feldwick, as our HLF Return to Steam project leader, is very confident that 2017 will be the year we return to steam and he and his team have done a sterling job to overcome all the many hurdles. We are not sure exactly when this will be, but we are busy preparing and drawing up plans to celebrate this major milestone in the history of TWT. One of the events we are planning is a special steaming for volunteers, Friends and their families, when I very much hope to see you. However, we also need your help! The return to steam is going to apply pressure to our small group of



regular volunteers and we need more to join in. I appreciate that for many this may not be an option, but if you can help in any way, or know of someone who would fancy learning how to fire a boiler, or do something else which will assist us or could release an existing volunteer to do this, now is the time to step forward please. We are hoping to launch appropriate training schemes very shortly.

Turning to the future we are now working on a proposal to look at the next stage of our development - the Lime Kilns and Railway project. This will build upon the lessons learned from the Return to Steam project.

To improve our communications further, we have aspirations, like many other charities, to have a Friends 'log in' section on our new website. This should contain the latest news, comments and other information that you may find useful.

As always I would welcome offers of assistance please, and also any feedback, either by email: mikesouthgate58@gmail.com or telephone: 01962 713537.

Mike Southgate

Young Queens

Late in the year, in September or October, young bumble-bee queens leave the nest and look for a safe, dry place, usually in a small hole in the ground, to shelter for the winter. However, they have but a few months in the following year to build a new nest and raise a busy and successful family in the face of many hostile forces such as cold, wet weather and predatory badgers; even so they are amongst the first of the insects to emerge, in February or March, hunting for a nest-site and nourishment for themselves and for their first crop of eggs.

These robust and hairy creatures are not deterred from their search by the cold or lack of sun - you may have seen them hunting about amongst the first flowers of lungwort or wood anemones, or scouring banks and hedges for a nest site. They will fly a mile or so to find the pollen and nectar they need and the very best supply they can find is likely to be the bright yellow flowers of the pussy willows that can be found in some hedgerows and gardens.



At the waterworks we are quite well blessed at present with butterflies and dragon flies but we are undoubtedly short of bumble-bees even though we have plenty of flowering plants that they could enjoy throughout the summer. Our shortage is but a local example of a country-wide decline in the number of wild bees, a shortage that threatens to bring damage to the species and also to farming and gardening everywhere

(I am not writing about honey bees which are domestic creatures that only exist now because they are tame - but about bumble-bees that are part of the wild world that pollinates all the flowering plants on which the human species, for example, depends. Be warned! - "When the wild bees have gone, all the people will have gone too".)

Late last year we searched the commercial nurseries for two saplings of salix caprea (fancy for pussy willow or goat willow) but failed; there was not one to be had. Terry Forder-Stent, our resident expert in such matters found thirty bare-rooted whips for a reasonable price instead.

Terry not being available, Andy Rankine, assisted by Phil and encouraged by me, set out on a day in mid-November to plant the whips. We managed to plant twenty-eight whips around the wildlife area on that rather cold and gloomy day. Alas it

was not, and had not been, wet. We prayed for rain and in a day or so it came so hopefully they have survived.

These little plants will not flower this year (2017) of course, but if they survive and grow into trees in all the corners and strange places that we have put them, the waterworks may in time become the local burger bar or entertainment centre for young bumble-bee queens in Spring. Time alone will show whether these tender whips have survived our planting and

are going to provide brilliant yellow provender for bees.

Although, if the scheme works as intended, the great blooming of the pussy willows will take place in the early Spring and our friends and visitors will miss the event, on the other hand, they may possibly see and hear more bumble-bees on Open Days in the years ahead.

We are quite excited in a slow kind of way.

Richard Stobard

Winter Clearance

Before the arrival of Spring and the bird nesting season significant clearance of tangled scrub and maintenance has taken place on land that forms part of the Trust's lease but which lies outside the fence of the main site.

This area, to the immediate south



west of the pumping station, was used to dump the overburden from the quarry when the kilns were in operation and the resulting hillocks now have a selection of mature trees growing on them. The more level parts had, around a decade ago, a fair flora and was home to a solitary Twayblade. In recent years the choking effects of encroaching brambles and Old Man's Beard had made this location a wilderness which the recent activity should help to reverse.

Matthew

Assorted Containers

After the brickwork contractors had left, and we had recovered most of the bits for the boilers, we were left with one leaky and almost empty container obstructing the entrance to the quarry, another full of stuff of questionable usefulness and a third destined only for scrap. In addition, equipment which had had to be moved from elsewhere on site was obstructing floor space in the new workshop. After much debate, and many e-mails, a plan was hatched.

The leaky ex-"boiler bits" container would be moved to the other side of the quarry entrance and given a felted roof; to be used for boiler coal, general storage and overflow to the workshop. The other container would have its contents relocated, rotated through 180 degrees and become a garage for the tractor mower and its trailer.

The first step was to sort the remaining boiler bits into either scrap or potential spares. The latter were



mainly moved in behind boiler 3. In addition, a base of paving slabs was prepared south of the new workshop for the container's new location. Next was the disposal or relocation of the contents of the other container; this took quite a few sessions. We had to get it light enough for a crane lorry to lift!

Finally we were able to get the man with a lorry in, to move one container across to its new location and to rotate the other to face towards the quarry. Once he had wriggled his vehicle past the mess room, this turned out to be quite straightforward. The photo shows a container in mid-flight.

Work then started on fitting a sloping roof on top of the leaky container, first sloping furring pieces, then sheets of OSB and finally hot torched felt. Meanwhile the whole of one side was fitted with shelving. All accessible sides of both containers were rubbed down and given a coat of Twyford green. The result is very impressive as you can see, and it has survived the winter so far. Morley

Twyford Waterworks Website

I am pleased to report that the last part of the interpretation project is now in place with the launch of the new website. Alan and Emily from Touchwood Design have created the site to echo the style and colours of the new information panels in the Discovery Zone and around the site.

The main aim is to encourage visitors to the website to come along to our open days and therefore it contains all the information they need to know; dates, opening times, accessibility, facilities etc. There is also a potted history of the waterworks and an interactive map where they can get a taste of what they will see and experience on a visit.

Information and application forms

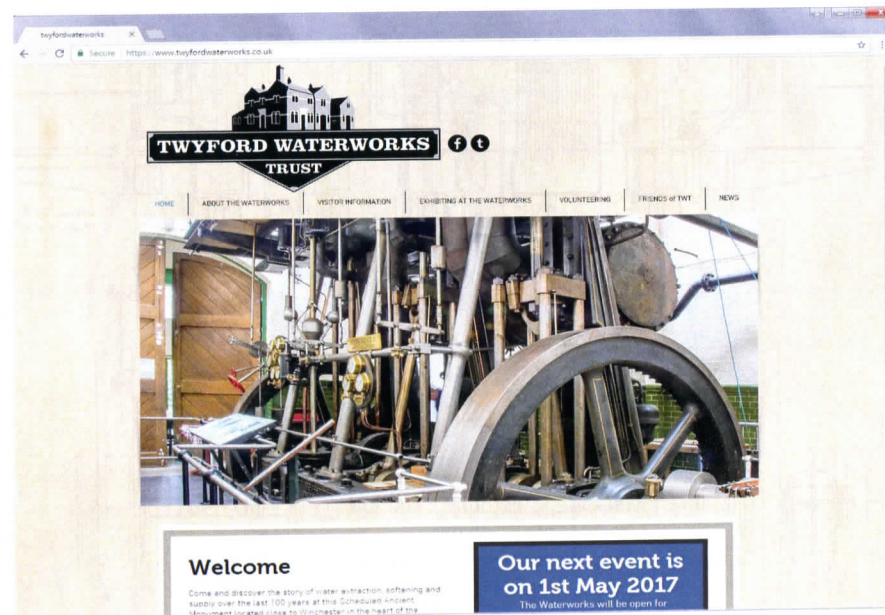
for prospective exhibitors, volunteers and Friends are available for downloading and printing. For existing Friends there is a page, accessed with a password, which contains news of the work going on around the site and a link to back issues of 'The Works' (not all yet but I'm working on it!) Please see Lesley's 'Friends' article for the password.

So for all the latest news and information visit:

www.twyfordwaterworks.co.uk

and don't forget to use your 'refresh' button to make sure you see the latest updates.

Alan Tearle, Webmaster
alan.tearle@hotmail.com



Return to Steam – our Heritage Lottery Project

As predicted in the November Newsletter, this winter has been a very significant time for our Return to Steam Project, and we have completion in sight at last! The start of the project seems a long, long time ago now – and it is, as we started the original work back in 2006! The determination and tenacity of our small Trust will make a great story once we've actually finished and have steam back at Twyford.

To show you how it's coming on, here's a summary again of where we are, and this time I've shown what's left to do so you can see the next steps.



The Steam Part – Alasdair McEwen and his team were busy at the Works during January. Outside, the new blowdown vessel now sits impressively alongside the chimney. Inside the Boiler House, the new upper hotwell and stand have replaced the old one alongside the boiler and look very smart. Under the Hathorn Davey the lower hotwell has also been replaced with a new one – both hotwells have been manufactured specially to meet Southern Water's additional requirements. Also in the Boiler House is a fine set of valves ready for final positioning. On the boiler itself the crown valve has been replaced to meet boiler regulations. McEwens have also stripped out all the steam piping, which will be replaced by all

new piping, hopefully before Easter.

Removal of the piping gave us an ideal opportunity to redecorate the end wall of the Boiler House, paint other fittings and complete other work that the Trust has responsibility for. Attention has been turned recently to the boiler steam pumps and to the Russell Newbery diesel generating set.

The Building Work – Gregory Havant attended to all the remaining snagging items but there remain three in particular which we've been unable to accept. The tarmac repair outside the Tea Room has addressed the level issue but the standard is poor and it will need to be redone. Work on the Boiler House door lighting resulted in the fitting of an inappropriate light

unit, which will have to be replaced. A damp patch in the internal wall in the Gents toilet was not fixed by a roof repair as expected, and will need a full investigation. We have therefore agreed with Gregory Havant that other companies will attend to these, and we have adjusted the final payment to them accordingly. It is planned to address all three items before the start of the Open Day season.

The Interpretation – the website is now completed, and if you are able, to please have a good look – we think that it's really good! There's all the information anyone would need on it, and it should attract plenty of people to us. Alan Tearle is our new webmaster, and you'll read elsewhere all about the Friends Page.

Southern Water – I'd like to say that all the issues with Southern Water have been addressed, which they have, and that all is now well, which it should be, but we have still to gain any assurance that we are good to go. We know that we must pass vibration testing before we can steam regularly, but that can't be carried out till we test steam. I remain the eternal optimist that all will come together – so yes, I am very optimistic that we'll be steaming very soon!

Going back to steam – as we rapidly head towards steaming, there's still 1001 things to do! To satisfy Southern





Water, anything around the site that contains oil or any other fluid is being given a bund tray – 35 so far! Additionally the large boiler water tank opposite the toilets is having a bund wall constructed, with the base being laid by volunteers and the brickwork – which will match the toilets – being laid professionally.

Our attention is now focusing on what else we need before we steam to the public. Training, publicity, new equipment, materials, consumables – it's a big list! Then there's how we

want to reintroduce steaming – initial trials and then some celebrations to thank everyone who has played a part in this – which will, of course, include all our many Friends!

How can you help?? There's two ways: Donations of money for the Return to Steam are still very welcome, and will enable us to buy the many essential items we still need. Thank you for the donations that we've received during membership renewal time.

Volunteers: if we are to steam to the public we still need more volunteers to join in! If boilers and engines aren't your thing, is there anything else you could help with please, especially when we are open to the public? We're a friendly enthusiastic team and will welcome you whatever you can do, and whenever you can do it. Do please consider this and mention it to anyone who you think might be interested.

Graham

HLF Project Director

01929 552973

feldwick@globalnet.co.uk

Date for your diary
The Twyford Waterworks Annual General
Meeting will be held on
Sunday 23rd July

Around the Works

We are busy preparing for our 2017 Open Days season at present, with volunteers spending increasingly more of their time in getting jobs completed and the site ready for visitors and, of course, return to steam.

The Transfer House has continued to have a lot of maintenance work carried out including replicating



some of the windows which had rotted badly.

This task has identified that the wooden building will need some serious attention within a few years although the painting of the exterior and improving the interior will buy us time to carefully plan the project. The pipework for the cooling water system for the Transfer engine has been redesigned and re-routed; doing away with 'temporary' plastic hose which must be twenty years old! The main reason for the change, apart from aesthetics, is to improve the



ease for draining down in the winter. This means that in the past few years pipes for fuel, air and water have all been checked, reconsidered and, in some cases, replaced to ensure they are fit for purpose. The next task in here is to update the electrical wiring and replace the life expired tubular heaters.

The Diesel House has had some of the missing wall tiles replaced and a good clean has been carried out ahead of the final painting of the internal gloss paint once the weather warms up again.

It is good to know that we are close to returning to steam with the final boiler works due to be finished shortly. Lots of small items in the Boiler House are being attended to as part of the final push. With the removal of the old steam piping we can now get to the walls behind Boiler 1. These are now being repainted and some of the ancillary equipment has been painted for the first time in many years. In the Engine House the deep clean of the

Hathorn Davey engine continues and it is really starting to look smart again as the small team working in there eagerly look forward to the day when she is working again.

Around the whole site there have been great strides made to improve the electrical wiring in order to bring the other buildings into line with that carried out as part of the HLF project. Potentially easy to overlook, safe electrics are, of course, of utmost importance and there is the added bonus of power and light being brought into areas where we had hitherto had to make do with trailing extension leads and temporary lights or even torches.

Progress continues to be made in the new workshop which is being utilised and provisioned to aid both restoration and maintenance of the Waterworks. After years of scratching about looking for displaced tools or working in buildings such as the Diesel and Filter Houses it is quite a luxury to have a dedicated building - with the added bonus of being warm!

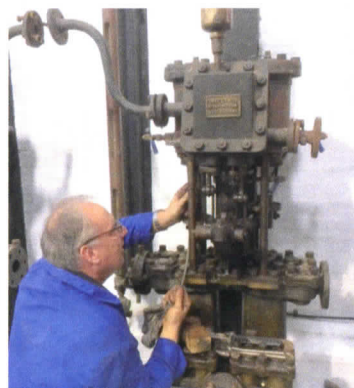
The Amport pump has received more attention to its bearings and now turns far freer than ever before. The final connection of a small AC electric motor to the pump by means of a rubber belt and specially turned pulley will allow it to be demonstrated in motion at open days during 2017. The design of this is

relatively unobtrusive while allowing for 240v DC operation in the future.

The Wednesday Conservation Volunteers are making another appearance in April to erect replacement fencing and replace posts that are rotten at the bases. This includes fencing by the railway and kilns.

The Nature Trail has been largely untouched during the winter months because of the inclement weather and the dark evenings although good progress has been made on some of the tall banks by the main road. With lighter evenings we are once again working on paths, removing leaves, cutting back, attending to the pond and surrounds, and a whole host of other jobs which we need to complete before we open for the new season. We have a resident pair of Mallard ducks on the pond already and we are hopeful that they will nest on the island again as they have done for the previous two years.

Terry and Matthew



Railway Update

As anyone who has driven Lister 42494 over the past couple of years will relate the clutch on this particular locomotive is not particularly responsive and the clutch pedal itself has (had) an interesting oscillating 'waggle' while the engine was running. We had a problem with it while visiting Amberley in 2015 resulting in a hasty repair on the Saturday night of their railway gala and the decision was taken at the end of the 2016 season that an overhaul or a rebuild was required. The clutch itself is to a non-standard design and is probably not the original fitted to the loco in 1956. We had initially believed that it was common to Fergusson TE20 tractors and initial investigation appeared to bear this out. However, once dismantled by



Dave Piper, who we engaged to carry out the work, it proved to be something more unusual in the shape of a clutch from a Bedford QL type lorry. A full refurbishment has been carried out replacing or remaking the seriously worn components and as I write the gearbox assembly has been lowered into the frames ready for reconnecting to the engine and wheels, and the 2017 operating season.

Elsewhere on the railway we have continued with replacing rails and the steep line to the top gate has seen a fair amount of hand-worked traffic with the movement of cut brash.

Matthew

Friends of Twyford Waterworks

The days are getting longer, there's a definite feel of spring in the air, and we're looking forward to another season of Open Days.

Membership renewals for the Friends of Twyford Waterworks become due on 1st April. If you pay by standing order, joined the Friends towards the end of last year, or have recently sent me your renewal donation, thank you, your membership card is enclosed. Thank you as well to all who have generously included an extra donation.

If you've not yet renewed for 2017 could I urge you to consider continuing as a Friend please? – I'd love to hear from you and your support is crucial to the Trust.

2017 will be an exciting year for Friends! As well as the usual benefits – 3 newsletters a year; attending the AGM; email updates; and a smart membership card entitling you to free admission to Open Days – we now have a dedicated Friends area on our new website.

You don't need an email address for this, just access to the internet, either at home or at your local library etc. Search for the TWT website or type Twyford Waterworks into Google. Click on the Friends 'tab' near the top of the page, and look for the 'Already a Friend?' button. You'll need to type the password which is Babcock06

(that's a capital B, and 06 are numbers). Here you'll find some back copies of 'The Works' and up to date news about what's happening in every area of the Waterworks, and especially the Return to Steam project. The password will change with each newsletter, so you'll need to be a current Friend to keep in touch!

We haven't had a Friends' Event for a while, but 2017 will see a special steaming and celebration for Friends to mark the completion of the Return to Steam project, but more of that later in the year.

On a sadder note, our good Friend Frank Brown passed away in January. Frank was a long standing supporter and member of the Friends of Twyford Waterworks, and our thoughts and condolences are with his family.

Finally, warm welcome to Jessie Hunt who has recently become a friend. Please don't hesitate to contact me about anything to do with The Friends, or to renew your membership.

Lesley, 01929 552973
friends@twyfordwaterworks.co.uk



Volunteer Vacancies

We are currently seeking for an Open Day Assistant, Company Secretary, & Archivist.

We are always looking for extra Volunteers If you find that any of

these Volunteer vacancies are of interest to you, please contact me for more information and to arrange an informal chat.

Terry Forder-Stent,
forderstent@talktalk.net

Picnic Benches

Thanks to a generous donation from a Friend and a grant from Twyford Parish Council we have four new picnic benches! This was in response to an appeal for funds for replacement benches in the last newsletter. Thankfully they arrived in flat-pack form (as shown in the photograph) which aided transportation to the Works considerably! These will be invaluable during the 2017 season as we continue to enhance the visitor experience.



SARSEN PRESS

Sarsen Press is an independent printing company that has been operating in Winchester for more than 30 years.

We provide a helpful personal service to individuals, businesses, charities and voluntary groups. We have high

standards and offer good value for money. We work with you to ensure that we produce exactly what you want.

Whenever possible we use Forestry Stewardship Certified and recycled paper.

You can supply your work to us by email or other computer media. Some jobs can be printed directly from your hard copy. Our graphic designers can also work with your copy to design and typeset your work.

We also do photocopying, guillotining, stapling, padding, collating, booklet making, wire binding, plastic comb binding, perfect binding (paperback books), book production, numbering, scoring, perforating, drilling and mailing.

Sarsen Press, 22 Hyde Street, Winchester SO23 7DR
info@sarsenpress.com • www.sarsenpress.com • 01962 854281