

THE WORKS

A photograph of a brick waterworks building with a tall brick chimney, surrounded by trees and a blue sky with clouds. The building is made of red brick and has a grey metal roof. The chimney is also made of red brick and is very tall. The scene is framed by bare tree branches in the foreground and green trees in the background.

Newsletter of the
Friends of Twyford Waterworks Trust
April 2026

The Twyford Waterworks Trust
Company limited by guarantee 1904919.
Registered Charity No. 291720

Board of Trustees

Chairman: Graham Feldwick (01929 552973)

Vice Chair: Matthew Feldwick

Secretary: Anna Bispham

Company Secretary: John Atherton

Treasurer: Richard Broadway

Twyford Parish Council Representative: Sue Cook

Hampshire Buildings Preservation Trust: Vacant

Colin Billinghamurst, Paul Fairbrother, Rob Fish, Tom Frost, Chris Harvey,
Jim Jones, Duncan Russell, Richard Willock.

Management Team

Compliance & Health & Safety Team: Rob Fish, John Atherton, Matthew
Feldwick, Colin Billinghamurst, Ray Caine, Andy Dickson

Clerk of Works: Colin Billinghamurst

Finance: Richard Broadway

Housekeeping: Ian Harden

Volunteer Work Co-ordination: Matthew Feldwick

Friends Membership: Lesley Feldwick (01929 552973)

friends@twyfordwaterworks.co.uk

Editor – The Works: Vicky Feldwick

Publicity: Matthew Feldwick

Group Tours: Dave Wallis (07708 459746)

Open Day Co-ordinator: Matthew Feldwick

Admissions & Visitor Support: Sue Cook

Tea Room & Catering: Carol Jones, Caroline Hawkins, Jim Jones

Steam Team: Alan Down

Internal Combustion: Paul Fairbrother, Chris Fairlie

Lime Kilns & Water Softening: Graham Feldwick

Wildlife: Neil & Lynda Smith, Graham Feldwick

Twyford Waterworks Railway: Graham & Lesley Feldwick, Matthew
Feldwick

Welcome to the Works!

...and a very warm welcome to everyone at the start of our 2026 Open Day season. Being a Friend is a vital part of our Trust and thank you for your continued support.

Few of our many visitors realise the amount of work that goes on throughout the year that makes the Waterworks the wonderful and vibrant place that awaits them. When the gates are closed for the last time each October then this is the signal for the start of the Winter Work Programme, a time to carry out a lot of the maintenance, overhauls, repairs and decoration at a time when tasks that will need to spread over several weeks can be tackled. This edition will, we hope, provide a flavour of what has been achieved during the coldest – and wettest – months of the year. Not that this covers everything by any means – there's so much more going on with yet more of us quietly getting on with a host of other tasks, including all the important planning for the months ahead.

We are of course all volunteers, and the Trust is most grateful to all who give their time, skills and experiences to keep the Waterworks running. We always welcome more too!

At the very beginning of the year we were deeply saddened by the passing of Pam Moore, who had been right at the start of our long Waterworks story, and had been a Trustee since the Trust was formed. Pam's encouragement, support and determination has played a huge part in where we are today, and her gentle guidance will be greatly missed.



Graham Feldwick

Internal Combustion Team

The Johnson pump set is getting a mechanical overhaul of the Lister engine and the pump, which need attention to prepare them for the coming Open Day season, and also a cosmetic overhaul for the whole unit. This primarily entails returning it to its factory original rather striking orange colour.



The Johnson pump set during its overhaul.



The new cooling tank for the gas engine.

The cooling tank on the gas engine in the Filter House has reached the end of its working life, and we have been working to replace it, creating a new stand and installing a spare tank that was available. Currently, we are working on replacing the cooling supply pipework to the connections on the new tank, which do not match the existing pipework.

The three air receivers for the large Ruston diesel engines were removed for their bi-annual survey/inspection, which they have passed, and they have been reinstalled prior to their functional test.

As part of our program of improvements to systems, the jacket water heater has been reinstalled on the Ruston 4VER in the Diesel House to preheat the cooling water before starting to reduce the thermal stresses on the engine. We are also looking at the feasibility of doing something similar to the Ruston 3VCR in the Transfer House, though it was not fitted with one during its working life so this is a little more challenging. We are in the early stages of looking at the work and cost involved in returning the Ruston 3VER in the Diesel House to operation, the first phase of which is to identify any parts that need replacement or repair. *Paul Fairbrother*

Southern Water at the Waterworks

Southern Water and our Trust share the Waterworks site and work closely together throughout the year. Twyford Waterworks remains an important Water Supply Works, and Southern Water Operations has been busy with a number of projects. Inside the front of the main building, where the wells are situated, the metal flooring has been completely replaced, with some of the old flooring kindly donated to our Trust for our reuse in the future. Outside, the pit cover in the roadway opposite the Diesel House is being replaced with a much stronger version, there is ongoing work to cap redundant water valves on the site, and an assessment is being made of the roadway near the Tea Room, which has started to break up during the winter.



As the owner of the Waterworks, and our landlord, Southern Water has a responsibility for the structural integrity of the buildings and in 2026 plans to have these assessed to identify future work, with an emphasis on the kilns and softening buildings. This will eventually enable our Trust to develop a major project on Water Softening for these. We are also pleased to announce that Southern water is funding the latest version of our 'A fascinating day out' leaflet, which is used both for publicity and as a guide for our visitors.

Graham Feldwick

Where do our Open Day visitors travel from?

I have deliberated in previous articles the actual numbers of visitors that attend Open Days; and then those who elect to gift aid their admission fees thereby providing much valuable income to the Trust.

Now let us consider how far our visitors may have travelled. We are not normally in the habit of requesting that information at the point of entry, but we do have a valuable source of data from those that gift aid. In order to recover the tax element of their admissions from HMRC we are required to obtain some brief information which includes postcodes. By extracting that data this enables us to create a profile of distances travelled.

Analysis of that data, not surprisingly, shows that a significant majority are from the SO (Southampton) post code area. A great many of the rest are also from surrounding postal areas. Looking back over the 2019 to 2024 period (excluding 2020 for Covid), the following table shows the overall breakdown.

Postcode	Area	% of Visitors
SO	Southampton	64
PO	Portsmouth	10
GU	Guildford	7
RG	Reading	7
SP	Salisbury	3
BH	Bournemouth	2
BN	Brighton	1
	Other	6
		100

The 'other' covers most areas of the country including the Lake District, Doncaster, Manchester, Cardiff and Plymouth. Sometimes in the kiosk we do engage in conversation, and somebody may have travelled to the Waterworks to view something specific; indeed I recall two gentlemen travelling from Sheffield just to see the steam engine in operation. On occasions we do receive overseas tourists too who are often amazed at what we do. It's heartening to know that their experience is carried back to Australia, Japan, South Africa, USA or various countries within Europe.

Richard Broadway

News from the Steam Team

This winter has seen our usual vital round of boiler cleaning, stripping and insurance examinations, which have to be completed once the weather is reliably frost-free and warm enough to fill the boiler with water, so our work continues right through into Spring too. For the final testing we are also welcoming a new boiler inspector as our current inspector is retiring this summer. We are most grateful for all that he has done for us and we wish him well!



This winter has been particularly busy because we have also had to repair the second door aperture in our boiler's mud drum, so called because it is situated in the lowest point of the boiler where the internal water flow abruptly changes direction, so any scale or suspended solids will settle out forming a "mud" that can be periodically cleaned out by opening a blow-down valve and dumping the "mud" to waste. The repair involves using a coded (approved) welder to lay a thick bead of weld all around the door aperture, not easy in the very restricted space at the rear of the boiler, and then machining most of it away to leave a fresh circular aperture with parallel sides. This is an unusual design as it requires a circular door, smaller in diameter to the aperture to allow it to be inserted into the drum, and then a thick copper tapered ring fitted around the door circumference which then spreads to seal the space between the door and its aperture as the door is drawn tightly outwards by a large draw bolt.

Alan Down

Pam Moore 1952 – 2026

A remarkable era sadly drew to a close during the early hours of the new year when our long standing Trustee and volunteer Pam Moore passed away unexpectedly though peacefully in her sleep.

For over four decades she beavered away on administrative and promotional work for the Trust, helping to establish the necessary foundations for future success. When I first walked through the gates with her and the other fledgling volunteers early in 1986 as restoration work commenced in earnest, none of us could have foreseen how Twyford Waterworks Trust would develop, and she more than played her part in that.

Pam was born in Petersfield in June 1952. Shortly after this the family moved to Fareham where a lifetime association with the town began. After school she worked as a clerical officer, first in the Naval Pay and Records Office in Gosport then at Portsmouth Dockyard, before becoming a VAT Inspector. However, this was not for her, and she left and began a degree in Historical Studies at Portsmouth Polytechnic, and this would shape the rest of her life. Her interests soon spread around the county, becoming more involved in attempts to either preserve or record the industrial buildings that were in danger of being lost due to redevelopment. She joined several county-based groups, amongst them the Southampton University Industrial Archaeology Group (SUIAG), later becoming the Hampshire Industrial Archaeology Society, and in time becoming a member of the Council for the Association for Industrial Archaeology, (the AIA).

The Hampshire Buildings Preservation Trust was another important vehicle for Pam's work in industrial archaeology, serving as secretary for many years. Along with Phil Turner, another Twyford stalwart, she was once described as 'rather like the cavalry coming over the hill to save the beleaguered defenders from a fate worse than death... both just quietly got on with what needed to be done,' Together they also worked tirelessly to help Whitchurch Silk Mill get back on its feet after County Council funding had ceased and when the trading company at Bursledon Brickworks had to be wound up.

Through the University IA Group, Pam met Edwin Course, a lecturer at the university, who as is well known, was responsible for getting Twyford Waterworks listed as a scheduled ancient monument in the 1970s. Thus began a lifelong commitment, with Pam becoming the longest serving trustee ensuring that the Trust was always true to its founding aims. Her support, advice and encouragement have been crucial to our success over the years augmented by her gentle guidance, wise words and determination.

With increasing health issues gradually restricting her sphere of activity, Twyford Waterworks and Whitchurch Silk Mill became the two buildings and operations Pam focused on most particularly in later years and she was able to attend the Twyford Waterworks Trust AGM in October 2025. Following a pleasant though quiet Christmas, she spent New Years Eve sending and receiving good wishes to and from family and friends across the world and, having seen the New Year in, she settled down for the night. But in her sleep, she peacefully called it a day. Thank you, Pam for everything.

Ian Harden



Wildlife at the Works

After the dry summer season our wildlife area has rested and recovered ready for the year ahead. The pond is now full after a very wet winter and we've been busy clearing out lots of vegetation that had flourished last year. The island has been cleared too, and we hope to have some ducks visit in the spring. We are now waiting and hoping that we get some tadpoles this spring, along with all the usual pond life.



Weeding the pond on a cold winter's day.

The platform railings were in poor condition in places and these have been cut out and replaced, and the whole platform has been cleaned and treated. There is a possibility of a new gate for the pond area that will enable us to make the area slightly larger and get more seating in there as well. Some of the pond dipping equipment and information sheets are also being renewed for the coming Open Day season.

The meadows have also had their annual cut to enable invigorated new growth for all the wildlife that required that habitat. The cut grass is left in place for the seeds to fall out then it is raked up and composted, and we are grateful to our friends at the Wednesday Conservation Volunteers for their help with this. Sadly there is a noticeable decline in the small rodent population in the meadows, and our shrew and vole numbers have decreased dramatically. This (we think) is because of increased predation.



Wednesday Conservation Volunteers hard at work in January.

The wildlife walk has had some changes to the route down from the pond to Buckthorn Hill and a handrail installed on the slope up to the hide. The paths have been cleared of leaves and our leaf compost bin is now full. Tree branches leaning on the boundary fence and overhanging the hide roof have been cut back and the Hide's gutters and drain pipes cleared. The new hedge planted last year survived the summer drought (mainly due to a heroic watering by Matthew) and is progressing as expected.

The bird boxes around the site have been checked and are ready for new brooding families to move in. The whole wildlife team is now looking forward to another successful season with hopefully good weather for all of this year's Open Days.

Lynda and Neil Smith

The Discovery Zone

Those of you with younger visitors in tow will no doubt have discovered the Discovery Zone on an Open Day. Each event, there's a different children's activity to take part in from Lego, crafting, through to railway play. All related in some way to the many parts of the Waterworks. There is also a rolling video plus colouring, puzzles etc. Everything children (or their carers) need to take a meaningful pit stop as they explore.

We're currently on the hunt for one or two volunteers who might like to help on Open Days or even assist in preparing activities before the day. Please get in contact if you're interested.

Vicky Feldwick



For the first time since it was donated to the Trust by Southern Water the former control panel from Borehole 1 has been overhauled and powered up. Dating from the 1970s it represents the electrical pumping technology from that era.

Restoration of another locomotive completed!

Trust volunteers celebrated the completed restoration of Lister Blackstone 55730/1968 on 1st February, when the diesel locomotive was started and run for the first time for around 25 years. The loco was one of three Lister locos which worked at Bolton Fell peat works in Cumbria, and was purchased from the family of the late Peter Smith of Newbury in 2023.



How it was - LB 55730 in the undergrowth at Newbury in February 2023.

New to Bolton Fell, the loco was one of many on the extensive railway there which carried peat dug from a large bog to a processing plant. The loco was purchased in 1999 by Alan Keef Ltd and was used for a short period on a contract for the removal of the soil over a covered reservoir in Denton, Greater Manchester, so does have a slight previous association with the water industry! Much altered during its years of hard work in industry, it has been restored as such and will make another excellent working exhibit at the Waterworks

Graham & Matthew Feldwick

In poor condition after many years of storage in the open, the loco has required a major overhaul and complete restoration, undertaken by members of the Internal Combustion and Industrial Railway teams in our workshop. It has been outshopped in the somewhat unusual livery that it carried at Bolton Fell, which makes an interesting comparison with the standard Lister green!



A proud moment - LB 55730 and members of the restoration team outside the workshop on 1st February.

Friends Update

April is the start of the new Friends' year, and thank you to everyone who has continued their membership of the Friends of The Twyford Waterworks Trust. Thank you too for your extra donations. If you have renewed your membership, pay by standing order, or joined us after 1st September last year, your new membership cards are enclosed. If you have yet to renew, you'll find a reminder in this newsletter.

Although this year rates have had to rise slightly to reflect our rising costs and increased admission charges, the Trust has kept this to a minimum. The Friends are highly valued and your continued support is essential to the continuation of Twyford Waterworks – without you it just wouldn't exist!

We were extremely saddened to hear of the deaths of two long standing Friends recently. Chris Richardson had supported Twyford Waterworks for many years, both as a Friend and a volunteer. Chris grew up at Otterbourne and had many memories of the waterworks there.

Pam Moore was active at Twyford for decades. A much respected volunteer and Trustee. An appreciation of her is included in this newsletter. Our thoughts and condolences are with their families and friends.

Open Day season will soon be upon us! We'll be getting everything ready on Sunday 26th April and Saturday 2nd May. Please do join in if you possibly can. There are also volunteering opportunities in all areas, but in particular with our Wildlife and Kiosk teams. As always, there is a warm welcome to anyone interested, so come and join us!

Please contact me for any information, and we look forward to seeing you!

Lesley Feldwick

Winter work on the Industrial Railway

The wagon display area with its variety of different wagons from various industries is always popular with our visitors. Created over the winter of 2018 / 2019, the time had come this year to give the area some serious tidying. Additionally some of the exhibits have received attention. New wooden sleepers were cut to replace those that had rotted on the short section of 1ft gauge track that the little watercress wagon, which came from a handworked line at Bere Regis in Dorset, sits on. We have also replaced the sleepers under the 40cm gauge points that the end tipping wagon from the Knowl Hill Brickworks in Berkshire sits on.



Replacing sleepers in the wagon display area.



Chris and Matthew working on the new fencing for the incline.



The finished result showing the new access gate.

Attention is also being given to the ground sleeves that hold the wagon display information boards, and a final task for the Spring will be to get some straight edges where the gravel meets the grass, to have the whole area ready for another season. At the top of the railway incline we have replaced the original wire fencing with post and rail fencing, complete with a gate on one side for access. This has considerably neatened the appearance of the incline whilst making the area safer for visitors and providing better opportunities to watch and photograph the wagon on the incline. We look forward to seeing everyone at the Open Days. We are always happy to have a chat about the role that railways of all gauges played at so many places, including of course here at the Waterworks.

Dave Ansell



Did you spot the Waterworks being used as a backdrop for the episode of BBC's 'Inside the Factory' entitled Jammy Biscuits? Filmed back in July 2024 the segment, presented by Ruth Goodman, explored the role the Women's Voluntary Service played during World War 2. The episode can be downloaded from BBC iPlayer and the footage of the Waterworks can be found around 45 minutes in.

TWYFORD WATERWORKS

www.twyfordwaterworks.co.uk

2026 Open Days

3rd & 4th May

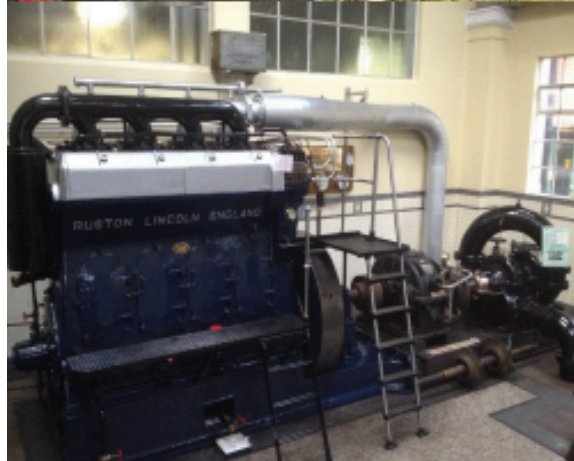
7th June

5th July

2nd August

6th September

4th October



Supported by

The National Lottery[®]

through the Heritage Lottery Fund

